

OFFICIAL SERIES LOOKBOOK

# OPHELIA: CITY EXODUS

---

CREATED BY KHALID MICHAEL

# PROJECT HERITAGE & FORMAT

**4**

PART MINI-SERIES

**15m**

EPISODIC BURST

**60m**

TOTAL RUNTIME

## THE ORIGIN STORY

Derived directly from a crewless, 48-hour micro-budget proof of concept short film. The original project was entirely written, cast, directed, shot, and edited by a single filmmaker over the course of one weekend. This structural background infuses the expanded series with a lean, efficient, and fiercely calculated production model designed for maximized visual punch.

# DIRECTOR'S STATEMENT

## AESTHETIC POSITIONING

*"OPHELIA has expanded from its rapid, guerrilla-style competitive roots into a dense, hyper-stylized urban gothic mythology. By breaking the story into four precise, fast-paced 15-minute chapters, this mini-series sheds bloated subplots to focus entirely on the internal politics, lingering guilt, and raw structural survival of a hidden vampire enclave. We are tracking a localized street war exclusively through the eyes of the monsters themselves."*

— **KHALID MICHAEL, CREATOR / DIRECTOR**

# SERIES CORE IDENTITY

## SERIES LOGLINE

*As a brutal civilian militia wages a violent crusade against a hidden gothic underground, a grieving vampire matriarch and her eccentric confidant are forced to trigger a tragic human transformation—while her escaped daughter fights a parallel, quiet battle to protect her newfound humanity.*

## NARRATIVE SYNOPSIS

In an unmapped, neon-drenched metropolis, a missing persons crisis prompts a firework-wielding civilian militia led by **Vex** to purge the gothic district known as "**The Shadows**".

The main story tracks **Carmilla** and her high-fashion confidant **Remi** trying to hide their predatory history by surviving ethically on animal blood. When Vex compromises their safety, an innocent alternative youth named **Tempest** is caught in the crossfire, forcing a brutal, unexpected transformation.

Concurrently, Carmilla's runaway daughter **Ophelia** attempts to blend into normal human life under a therapist's care, until an ancient aristocratic hunter tracks her down—forcing her to rely on local protection and her own fragile resilience to survive.

# CHARACTER GALLERY: THE SHADOW WORLD



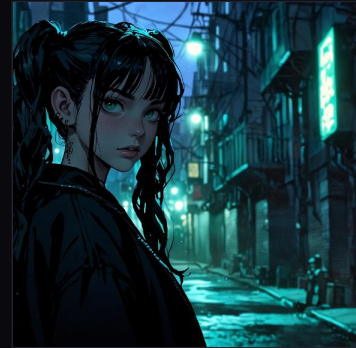
**CARMILLA**  
**GRIEVING MATRIARCH**

Centuries-old vampire hiding in the city's underground district. Consumed by immense regret for alienating her daughter Ophelia, she attempts to run from her past via a hospital job. Forced into a corner by Vex, she must protect a new fledgling and form an army.



**REMI**  
**DRAMATIC CONFIDANT**

Carmilla's eccentric companion who masks the deep isolation of immortality with high fashion, artistic flair, and rapid French phrasing. He is the practical architect of their survival, engineering a process to live strictly on organic animal blood.



**TEMPEST**  
**FLEDGLING CATALYST**

An isolated alternative youth looking for belonging within the city's gothic community. Naive to the actual horrors of the night, she romanticizes the dark until she is caught in a militia shootout. Her sudden transformation forms the heart of the series.



**VEX VORDENBURG**  
**ARROGANT ZEALOT**

A cold, transactional investigator who operates an animal-blood trading front to map out the gothic district. Using deliveries to locate vampire enclaves, he uses commercial fireworks to command a violent civilian militia on nightly hunts.

# CHARACTER GALLERY: THE HUMAN SANCTUARY



## OPHELIA / LAURA

**TRAUMATIZED HUMAN  
ANCHOR**

The powerless human center of the parallel subplot. Having fled her mother's violent past, she desperately craves a quiet, normal life. Lacking any supernatural abilities, her hard-fought safety is completely jeopardized when an ancient predator tracks her down.



## DET. MALCOLM

**MORAL PEACEKEEPER**

A rookie detective operating in a deeply gray area of the law. Saved by Remi in the past, he bridges the main conflict and the subplot by tracking Ophelia, choosing to gain her trust to preserve order rather than carrying out an arrest.



## DR. MIRIAM

**UNWITTING SHIELD**

A deeply empathetic therapist who provides Ophelia a stable home away from the streets. Miriam represents the pure civilian world. Her blind trust in the new figures she welcomes into her life turns her private sanctuary into a targeted location.



## ALOYSIUS

**ANCIENT PREDATOR**

Dr. Miriam's sophisticated new European boyfriend. To the humans, he is a charming aristocratic intellectual bragging about roots in Austria. In reality, he is an ancient rogue tracker using Miriam's practice as a cover to locate high-value anomalies.

# THE 4-PART EPISODIC BREAKDOWN: PART I

EPISODE 1: THE EXPOSURE ==> EPISODE 2: THE SANCTUARY OF IRONY

## EPISODE 1: "THE EXPOSURE"

The series opens on the primary storyline: Carmilla and Remi trying to navigate a quiet life in the city's disappearing gothic district. When Vex infiltrates their inner circle under the guise of an eccentric seller, a tense psychological chess match at a dinner table erupts into sudden, brutal supernatural violence, shattering their cover.

As a fateful signal lights up the night skyline with commercial fireworks, a full-scale shadow war is officially declared.

## EPISODE 2: "THE SANCTUARY OF IRONY"

The focus shifts to the parallel subplot: Ophelia trying to build a normal human life with Dr. Miriam. The past creeps in when rookie detective Malcolm tracks her down using city surveillance footage, but chooses to earn her trust to protect her peace rather than turning her in.

The subplot hits its peak of tension when Miriam introduces her charming new boyfriend, Aloysius. Unbeknownst to them, Aloysius is an ancient predator tracking Ophelia—leaving the completely vulnerable, unsuspecting girl in extreme danger as Malcolm races to intervene.

# THE 4-PART EPISODIC BREAKDOWN: PART II

EPISODE 3: THE BLOOD OF THE SAVIOR ==> EPISODE 4: THE CITY EXODUS

## EPISODE 3: "THE BLOOD OF THE SAVIOR"

The main narrative fractures into a deeply atmospheric look at the gothic underground's survival. We witness the tragic backstory of Tempest, whose naive romanticism of the dark turns into a nightmare when she is caught in a militia ambush, forcing Carmilla into a race against time to save her via a sudden, painful supernatural transformation.

Concurrently, Malcolm's historical connection to Remi is revealed, blurring the definitive lines between cop, vigilante, and predator as Vex's militia begins terrorizing innocent alternative youth.

## EPISODE 4: "THE CITY EXODUS"

The civilian militia's crusade transforms the desolate city streets into a literal slaughterhouse. Trapped in a corner, Carmilla and Remi build an unexpected, desperate resistance by turning the targeted alternative youth into an army of the damned. Backed by the local police through Malcolm's intervention, this newly formed "Goth Army" clashes to crush the militia.

As the dust settles and the vampires execute a massive, silent exodus from the metropolis, the sub-plot reaches its conclusion: Ophelia shares a poignant, silent moment of closure with Carmilla, choosing to stay behind to live her beautifully normal, human life.